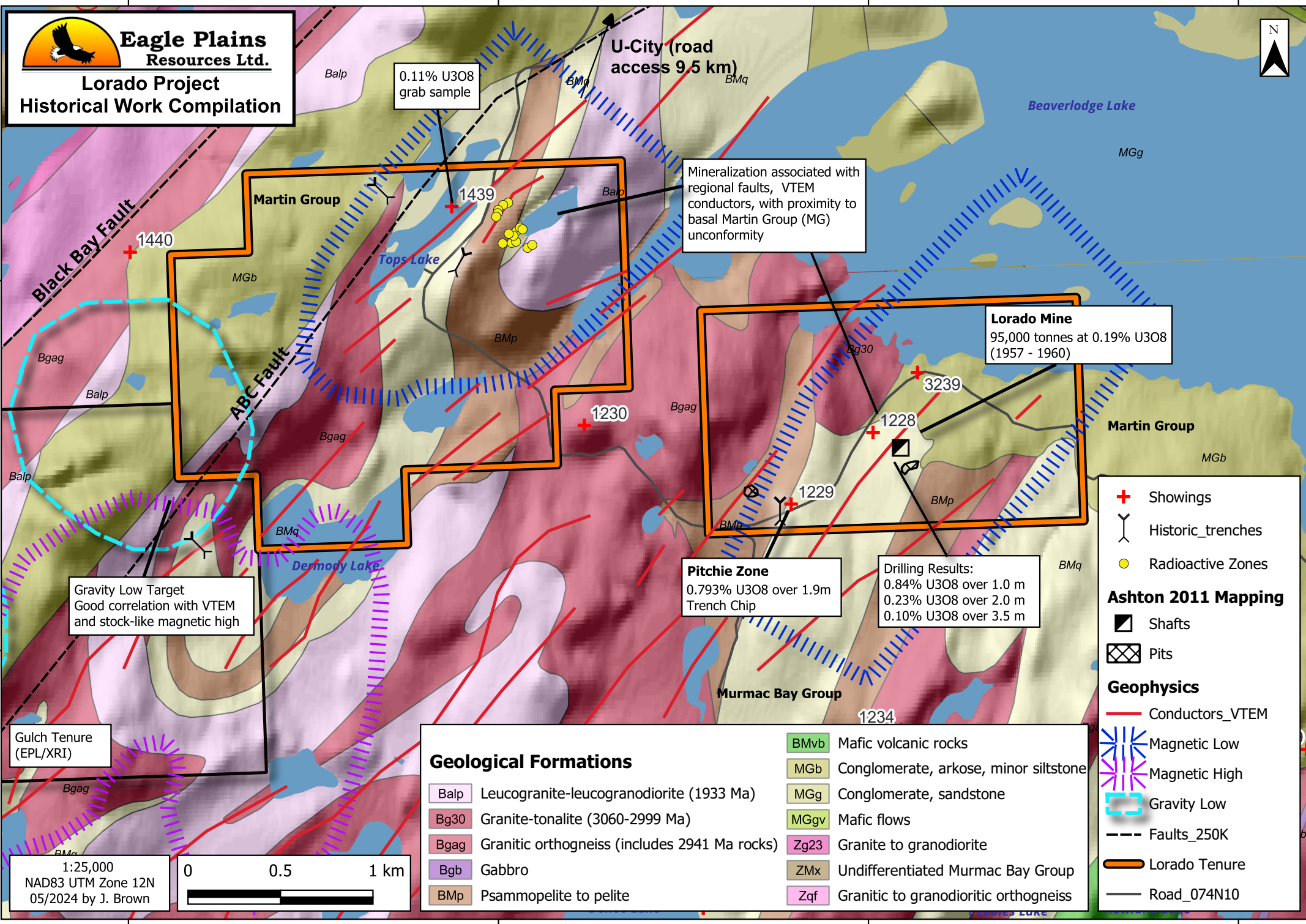




Eagle Plains Resources Ltd.

**Lorado Project
Historical Work Compilation**



0.11% U3O8
grab sample

U-City (road
access 9.5 km)

Mineralization associated with
regional faults, VTEM
conductors, with proximity to
basal Martin Group (MG)
unconformity

Lorado Mine
95,000 tonnes at 0.19% U3O8
(1957 - 1960)

Pitchie Zone
0.793% U3O8 over 1.9m
Trench Chip

Drilling Results:
0.84% U3O8 over 1.0 m
0.23% U3O8 over 2.0 m
0.10% U3O8 over 3.5 m

Gravity Low Target
Good correlation with VTEM
and stock-like magnetic high

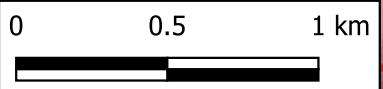
Gulch Tenure
(EPL/XRI)

Geological Formations

Balp	Leucogranite-leucogranodiorite (1933 Ma)	BMvb	Mafic volcanic rocks
Bg30	Granite-tonalite (3060-2999 Ma)	MGb	Conglomerate, arkose, minor siltstone
Bgag	Granitic orthogneiss (includes 2941 Ma rocks)	MGg	Conglomerate, sandstone
Bgb	Gabbro	MGgv	Mafic flows
BMp	Psammopelite to pelite	Zg23	Granite to granodiorite
		ZMx	Undifferentiated Murmac Bay Group
		Zqf	Granitic to granodioritic orthogneiss

- + Showings
- Historic_trenches
- Radioactive Zones
- Ashton 2011 Mapping**
- Shafts
- Pits
- Geophysics**
- Conductors_VTEM
- Magnetic Low
- Magnetic High
- Gravity Low
- Faults_250K
- Lorado Tenure
- Road_074N10

1:25,000
NAD83 UTM Zone 12N
05/2024 by J. Brown



628000E

630000E

632000E

634000E

6598000N

6598000N

6596000N

6596000N